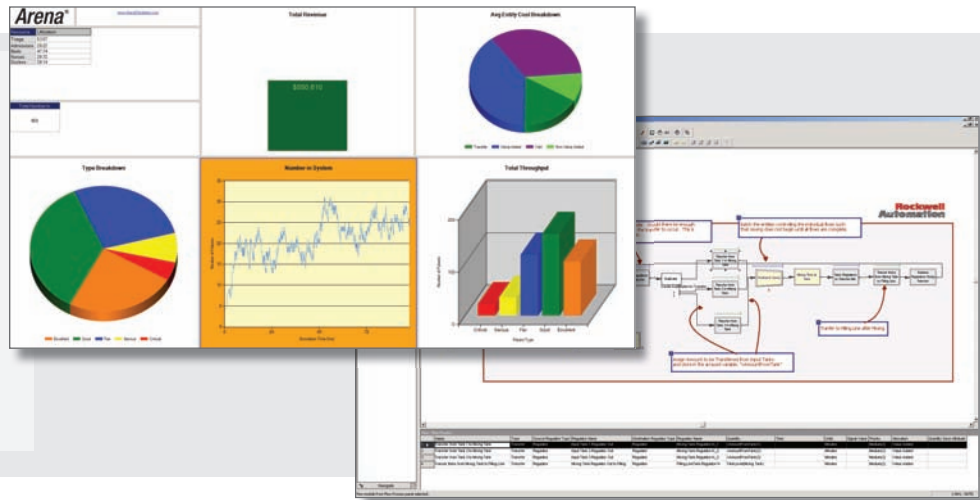


Arena® Simulation Software

What's New in 14.0

Arena®

Organizations worldwide have realized a return of more than 15 times their investment in Arena® and achieved these returns within a few weeks to a few months.



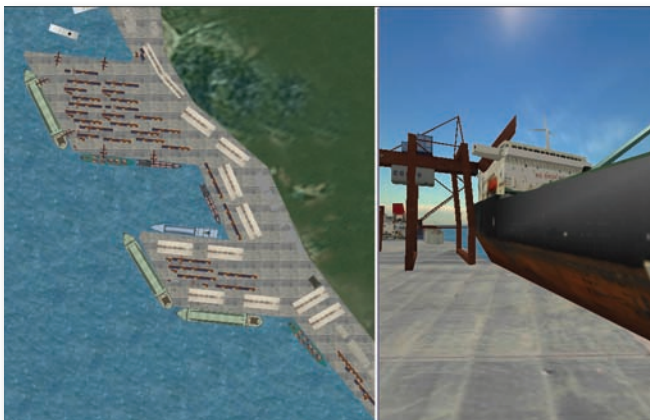
New Features

Arena Visual Designer with 3D Animation

Arena Visual Designer is the first step in the migration of Arena's graphic interface. The last release of the Arena Visual Designer tool introduced Dashboards. Arena's Dashboards allow you to display business graphics in separate windows and the Arena engine will animate both the current 2D visualization and the new Dashboard windows.

In this release, you can display realistic in-process 3D animation in the Visual Designer. Arena Basic Edition Plus license holders and above have the ability to create 3D animation.

Brief tutorials of the Arena Visual Designer tool are available in the video library on the Arena simulation web site at www.ArenaSimulation.com.



Arena Visual Designer 3D animation offers:

- Intuitive drag-and-drop environment to build 3D animation quickly and easily
- Incredibly realistic 3D animation leveraging a state-of-the-art gaming engine
- The ability to easily import Google Sketchup 3D images, animated meshes, .3ds images, background sphere and other common 3D animation formats
- Greater flexibility and visual control of your models
- The ultimate presentation environment for your simulation projects

New and Updated Example Models

Striking new and updated example models demonstrating 3D capabilities can be found in the following folders:

- For Windows XP sp3, the files are located in C:\Documents and Settings\All Users\Documents\Rockwell Software\Arena\Examples
- For Windows Vista sp2 and Windows 7, the files are located in C:\Users\Public\Public Documents\Rockwell Software\Arena\Examples

www.ArenaSimulation.com

LISTEN.
THINK.
SOLVE.®

 Allen-Bradley • Rockwell Software

**Rockwell
Automation**